

# MAICO

## 1979 SPARE PARTS CATALOGUE

MODEL : Magnum II

CHASSIS TYPE :	MC 250/T	Type 341	Engine Type 336
	MC 400/T	Type 342	Engine Type 337
	MC 440/T	Type 343	Engine Type 338

### CHASSIS DESCRIPTION:

Red frame with rear fender  
removable fork caps. New foot pegs - Corte Cosso shocks 370mm long - Front wheel travel increased to 275mm.

New tank decal. Quick

### ENGINE DESCRIPTION:

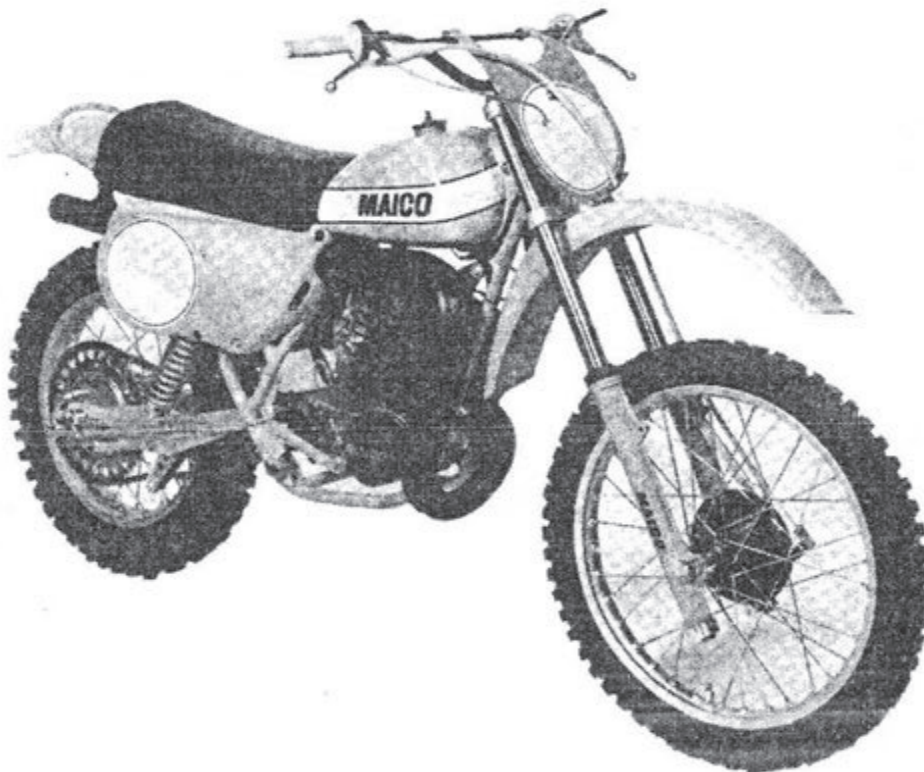
Same as 1978 with modified transfer port cylinder. 440, 400 with 40mm carburetor.

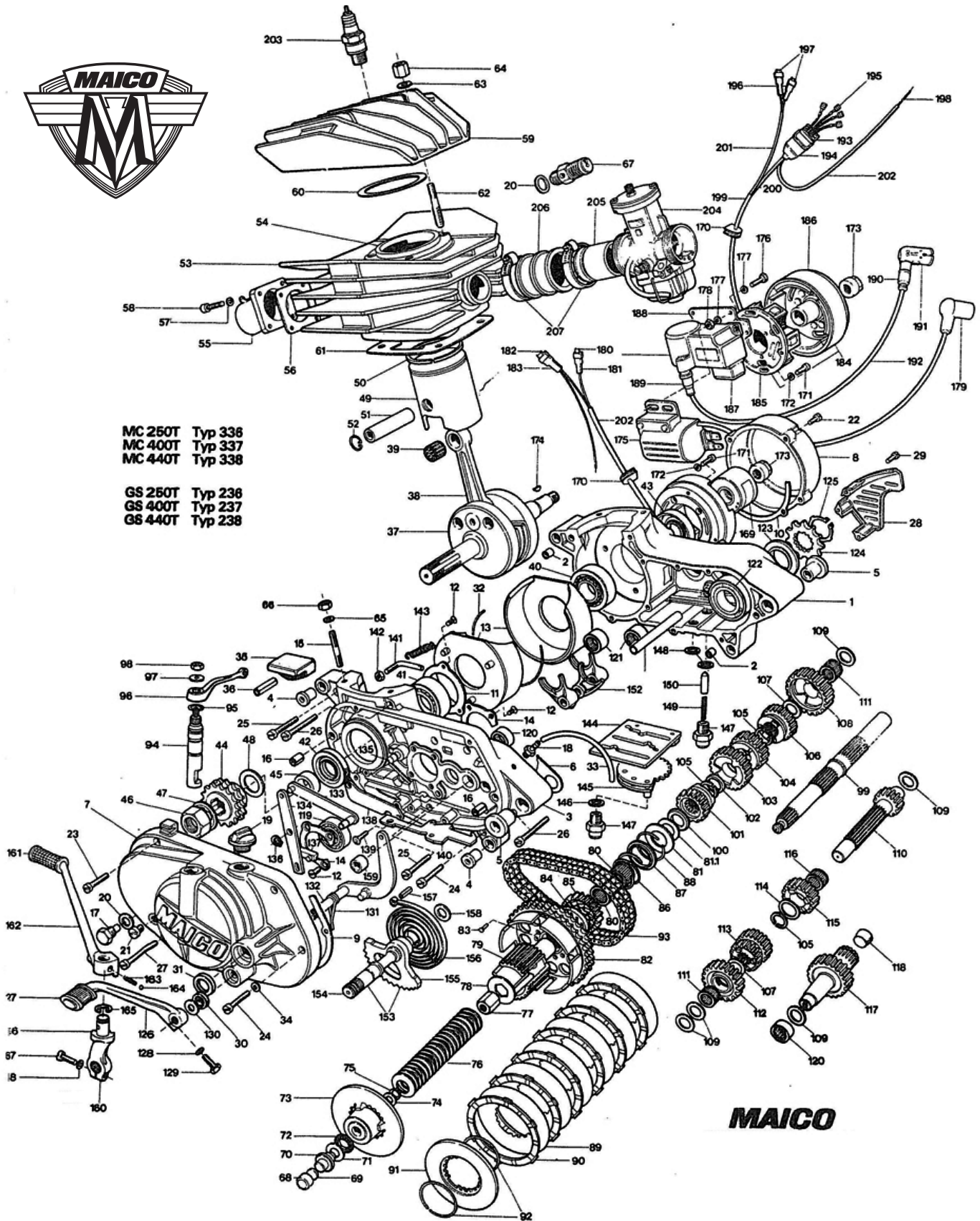
### FRAME IDENTIFICATION:

Stamped on the Steering head  
First 3 numbers: 341 0000

### ENGINE TYPE IDENTIFICATION:

Stamped on the left side of the  
engine case  
First 3 numbers: 336 0000





MC 250T Typ 336  
 MC 400T Typ 337  
 MC 440T Typ 338

GS 250T Typ 236  
 GS 400T Typ 237  
 GS 440T Typ 238

**MAICO**

Picture No.	Part No.	Description	MC 250	MC 400	MC 440	GS 250	GS 400	GS 440
1	1998	Crankcase right hand	1	1	-	1	1	-
	1982	Crankcase right hand	-	-	1	-	-	1
2	1997	Internal ring	2	2	2	2	2	2
3	1996	Crankcase left hand	1	1	-	1	1	-
	1979	Crankcase left hand	-	-	1	-	-	1
4	1995	Emgine mounting bushes	6	6	6	6	6	6
5	1994	Spacer bush for swing arm	2	2	2	2	2	2
6	1993	Crankcase gasket	1	1	1	1	1	1
7	1992	Crankcase cover	1	1	1	1	1	1
8	1991	Ignition cover	1	1	1	1	1	1
9	1990	Crankcase cover gasket left hand	1	1	1	1	1	1
10	1989	Crankcase cover gasker right hand	1	1	1	1	1	1
11	1988	Main bearing cover plate	1	1	1	1	1	1
12	1795	Counter sunk screw M 5x8 Din 965	11	11	11	11	11	11
13	1987	Crankshaft housing	2	-	-	2	-	-
14	1986	MS bearing cover plate	2	2	2	2	2	2
15	1787	Stud screw M 8x28 Din 940	4	4	4	4	4	4
16	1831	Tension pin 8x10 Din 7346	2	2	2	2	2	2
17	400	Oil drain plug	1	1	1	1	1	1
18	1985	Breather	1	1	1	1	1	1
19	1984	Oil filling plug	1	1	1	1	1	1
20	410	Spacer ring	1	2	2	1	2	2
21	1526	Cylinder head screw M 8x10 Din 84	1	1	1	1	1	1
22	1536	Cylinder head screw M 6x25 Din 84	4	4	4	4	4	4
23	1550	Cylinder head screw M 6x30 Din 84	3	3	3	3	3	3
24	1538	Cylinder head screw M 6x35 Din 84	5	5	5	5	5	5
25	1539	Cylinder head screw M 6x40 Din 84	6	6	6	6	6	6
26	1541	Cylinder head screw M 6x50 Din 84	2	2	2	2	2	2
27	1542	Cylinder head screw M 6x55 Din 84	2	2	2	2	2	2
28	1983	Counter sprocket cover	1	1	1	1	1	1
29	1533	Cylinder head screw M 6x18 Din 84	3	3	3	3	3	3
30	1865	Sealing ring AS 12x22x7 Din 3760	1	1	1	1	1	1
31	1866	Sealing ring A 18x28x7	1	1	1	1	1	1
32	1313	Sprint rubber	X	-	-	X	-	-
33	263	Breather tube	X	X	X	X	X	X
34	407	Flat washer A 6x10 Din 7603	2	2	2	2	2	2
35	2133	Sliding piece	1	1	1	1	1	1
36	1835	Tension pin 8x36 Din 1481	1	1	1	1	1	1
37	3225	Crankcase cpl	1	-	-	1	-	-
	3258	Crankcase cpl	-	1	1	-	1	1
	4131	Crankshaft part exchange	1	-	-	1	-	-
	4132	Crankshaft part exchange	-	1	1	-	1	1

Picture No.	Part No.	Description	MC 250	MC 400	MC 440	GS 250	GS 400	GS 440
38	4163	Connecting rod cpl	1	1	-	1	1	-
	4162	Connecting rod cpl	-	1	1	-	1	1
39	424	Needle bearing Red 0-2						
		Needle bearing Blue 2-4	1	1	1	1	1	1
		Needle bearing White 4-6						
40	426	Roller bearing NU 305 C3 Din 628	1	1	1	1	1	1
41	693	Ball bearing 3305 C3 Din 628	1	1	1	1	1	1
42	547	Sealing ring	1	1	1	1	1	1
43	3469	Sealing ring	1	1	1	1	1	1
44	3220	Duplex sprocket	1	-	-	-	-	-
	714	Triplex sprocket	-	1	1	1	1	1
45	713	Spacer	-	1	1	1	1	1
46	3240	Guide nut on crankshaft	1	1	1	1	1	1
47	3254	Securing plate	1	1	1	1	1	1
48	862	Washer 0.2 thick	When needed					
	3111	Washer 0.3 thick	When needed					
49	522	Piston std. 66.95	1	-	-	1	-	-
	2059	Piston 1st oversize 67.10	1	-	-	1	-	-
	2060	Piston 2nd oversize 67.25	1	-	-	1	-	-
	2061	Piston 3rd oversize 67.40	1	-	-	1	-	-
	532	Piston std. 76.93	-	1	-	-	1	-
	2069	Piston 1st oversize 77.08	-	1	-	-	1	-
	2070	Piston 2nd oversize 77.23	-	1	-	-	1	-
	2071	Piston 3rd oversize 77.38	-	1	-	-	1	-
	2072	Piston 4th oversize 77.53	-	1	-	-	1	-
	2110	Piston std. 81.92	-	-	1	-	-	1
	2112	Piston 1st oversize 82.07	-	-	1	-	-	1
	2114	Piston 2nd oversize 82.22	-	-	1	-	-	1
	2116	Piston 3rd oversize 82.37	-	-	1	-	-	1
	2118	Piston 4th oversize 82.52	-	-	1	-	-	1
50	523	Piston ring std. 67.00	1	-	-	1	-	-
	2064	Piston ring 1st oversize 67.15	1	-	-	1	-	-
	2065	Piston ring 2nd oversize 67.30	1	-	-	1	-	-
	2066	Piston ring 3rd oversize 67.45	1	-	-	1	-	-
	534	Piston ring std. LD 77.00	-	1	-	-	1	-
	2076	Piston ring 1st oversize 77.15	-	1	-	-	1	-
	2277	Piston ring 2nd oversize 77.30	-	1	-	-	1	-
	2078	Piston ring 3rd oversize 77.45	-	1	-	-	1	-
	2079	Piston ring 4th oversize 77.60	-	1	-	-	1	-
	2111	Piston ring LD Std. 82.22	-	-	1	-	-	1
	2113	Piston ring 1st oversize 82.151	-	-	1	-	-	1
	2115	Piston ring 2nd oversize 82.30	-	-	1	-	-	1
	2117	Piston ring 3rd oversize 82.45	-	-	1	-	-	1
	2119	Piston ring 4th oversize 82.60	-	-	1	-	-	1

Picture No.	Part No.	Description	MC 250	MC 400	MC 440	GS 250	GS 400	GS 440
51	535	Piston pin	1	-	-	1	-	-
	537	Piston pin	-	1	1	-	1	1
52	536	Circlip	2	2	2	2	2	2
53	2154	Radial cylinder cpl MC	1	-	-	-	-	-
	2157	Radial cylinder cpl MC	-	1	-	-	-	-
	2161	Radial cylinder cpl MC	-	-	1	-	-	-
	5698	Radial cylinder cpl GS	-	-	-	1	-	-
	5715	Radial cylinder cpl GS	-	-	-	-	1	-
	5725	Radial cylinder cpl GS	-	-	-	-	-	1
	4135	Cylinder part-exchange	1	-	-	1	-	-
	4136	Cylinder part-exchange	-	1	-	-	1	-
	4137	Cylinder part-exchange	-	-	1	-	-	1
54	5038	Cylinder liner	1	-	-	1	-	-
	2159	Cylinder liner	-	1	-	-	1	-
	2163	Cylinder liner	-	-	1	-	-	1
55	467	Exhaust flange MC	1	1	1	-	-	-
	5699	Exhaust flange GS 0 20	-	-	-	1	-	-
	5716	Exhaust flange GS 0 24	-	-	-	-	1	1
56	298	Gasket for exhaust flange	1	1	1	1	1	1
57	1704	Spring ring B 6 Din 127	4	4	4	4	4	4
58	1635	Socket screw M 6x25 Din 912	4	4	4	4	4	4
59	2156	Cylinder head Radial	1	-	-	1	-	-
	2160	Cylinder head Radial	-	1	-	-	1	-
	2164	Cylinder head Radial	-	-	1	-	-	1
60	65	Cylinder head gasket	1	-	-	1	-	-
	720	Cylinder head gasket	-	1	-	-	1	-
	2582	Cylinder head gasket	-	-	1	-	-	1
61	3004	Cylinder head gasket 0.3 thick						
	721	Cylinder head gasket 0.5 thick						
	2237	Cylinder head gasket 0.7 thick						
62	2967	Cylinder head stud	5	-	-	5	-	-
	2968	Cylinder head stud	-	5	5	-	5	5
63	1734	Washer B 8.4 Din 125	5	5	5	5	5	5
64	78	Hexagon nut	5	5	5	5	5	5
65	1714	Spring washer B 8 Din 137	4	4	4	4	4	4
66	1670	Hexagon nut M 8 Din 934	4	4	4	4	4	4
67	517	Decompression valve cpl	-	1	1	-	1	1
68	2251	Push pin cap	1	1	1	1	1	1
69	2252	Spacer 1.5 thick						
	2253	Spacer 2.0 thick						
	2254	Spacer 2.4 thick						
	2255	Spacer 2.8 thick						
	2256	Spacer 3.2 thick						
	2257	Spacer 1.75 thick						

Picture No.	Part No.	Description	MC 250	MC 400	MC 440	GS 250	GS 400	GS 440
70	2889	Push pin	1	1	1	1	1	1
71	1096	Bearing plate	1	1	1	1	1	1
72	1084	Needle cage	1	1	1	1	1	1
73	2886	Guide for clutch disc	1	1	1	1	1	1
74	2890	Washer 10.1x18.2x0.6	1	1	1	1	1	1
75	1842	Securing ring	1	1	1	1	1	1
76	449	Cup spring	20	20	20	20	20	20
77	448	Guide nut	1	1	1	1	1	1
78	447	Lock plate for guide nut	1	1	1	1	1	1
79	2580	Clutch body	1	1	1	1	1	1
80	736	Needle cage	2	2	2	2	2	2
81	444	Thrust washer	1	1	1	1	1	1
81.1	1884	Spacer washer 17x25x0.2	When needed					
	3432	Spacer washer 17x25x0.3	When needed					
82	2895	Clutch housing with kickstarter ratchet wheel	1	-	-	-	-	-
	2944	Clutch housing with kickstarter ratchet wheel	-	1	1	1	1	1
83	1906	Oval head rivet	8	8	8	8	8	8
84	729	Kickstarter ratchet wheel	1	1	1	1	1	1
85	730	Kickstarter pinion	1	1	1	1	1	1
86	731	Ratchet spring	1	1	1	1	1	1
87	732	Spring cup	1	1	1	1	1	1
88	733	Spring ring	1	1	1	1	1	1
89	3390	Inner disc	6	6	6	6	6	6
90	3396	Clutch disc	6	6	6	6	6	6
91	3391	Terminal disc	1	1	1	1	1	1
92	461	Circlip	2	2	2	2	2	2
93	2899	Duplex-chain	1	-	-	1	-	-
	2947	Triplex-chain	-	1	1	-	1	1
94	462	Clutch spindle	1	1	1	1	1	1
95	464	Sealing ring for clutch spindle	1	1	1	1	1	1
96	2898	Clutch lever	1	1	1	1	1	1
97	1732	Washer B 6.4 Din 125	1	1	1	1	1	1
98	1690	Hexagon nut NM 6 Din 980	1	1	1	1	1	1
99	2025	Main shaft	1	1	1	1	1	1
100	2043	M S shim	1	1	1	1	1	1
101	3441	1st gear pinion on mainshaft 19 teeth	1	-	-	-	-	-
	3449	1st gear pinion on mainshaft 17 teeth	-	1	1	1	1	1
102	3706	Spacer ring	1	1	1	1	1	1
103	3435	4th gear pinion on mainshaft 26 teeth	1	1	1	1	1	1
104	3434	3th gear pinion on mainshaft 24 teeth	1	-	-	-	-	-
	3967	3th gear pinion on mainshaft 23 teeth	-	1	1	-	-	-
	3443	3th gear pinion on mainshaft 23 teeth	-	-	-	1	1	1

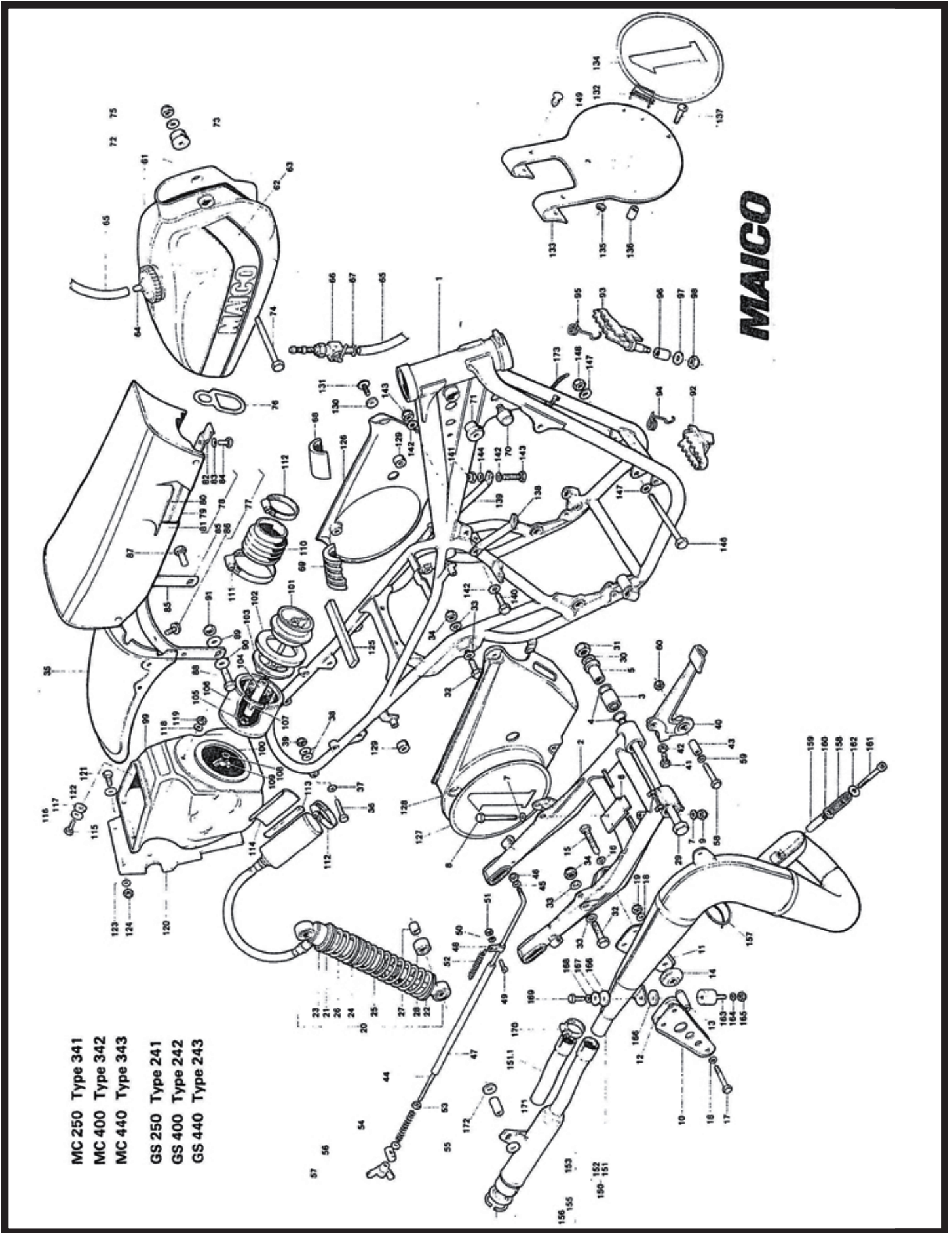
Picture No.	Part No.	Description	MC 250	MC 400	MC 440	GS 250	GS 400	GS 440
105	492	Retainer ring	3	3	3	3	3	3
106	3440	2nd gear pinion on mainshaft 21 teeth	1	-	-	-	-	-
	3448	2nd gear pinion on mainshaft 20 teeth	-	1	1	1	1	1
107	3723	Shim for 1st gear	2	2	2	2	2	2
108	2039	5th gear pinion on mainshaft 28 teeth	1	1	1	-	-	-
	2049	5th gear pinion on mainshaft 29 teeth	-	-	-	1	1	1
109	3893	Spacer washer	5	5	5	5	5	5
110	3437	Layshaft	1	1	1	-	-	-
	3445	Layshaft	-	-	-	1	1	1
111	913	Needle cage K 16x21x10	2	2	2	2	2	2
112	3438	1st gear pinion on layshaft 26 teeth	1	-	-	-	-	-
	3446	1st gear pinion on layshaft 28 teeth	-	1	1	1	1	1
113	3442	Twin block pinion on layshaft 19/21 teeth	1	1	1	-	-	-
	3450	Twin block pinion on layshaft 18/21 teeth	-	-	-	1	1	1
114	3456	Shim for 2nd gear	1	1	1	1	1	1
115	3439	2nd gear pinion on layshaft 23 teeth	1	-	-	-	-	-
	3447	2nd gear pinion on layshaft 24 teeth	-	1	1	1	1	1
116	3757	Needle cage K 20x24x12	1	1	1	1	1	1
117	2037	Drive shaft 28 teeth	1	1	1	-	-	-
	2048	Drive shaft 29 teeth	-	-	-	1	1	1
118	2038	Plug	1	1	1	1	1	1
119	339	Ball bearing 6303 CS Din 625	1	1	1	1	1	1
120	513	Needle bearing HK 1612	2	2	2	2	2	2
121	514	Needle bearing BK 1616	2	2	2	2	2	2
122	375	Ball bearing 6206 2RS C3 Din 625	1	1	1	1	1	1
123	2044	Spacer ring	1	1	1	1	1	1
124	3465	Sprocket 13 teeth	1	1	1	-	-	-
	3720	Sprocket 14 teeth	-	-	-	1	1	1
125	1848	Lock ring 29x1.5 Din 471	1	1	1	1	1	1
126	2327	Gear change lever	1	1	1	1	1	1
127	556	Rubber pad	1	1	1	1	1	1
128	1570	Hexagon screw M 6x25 Din 933	1	1	1	1	1	1
129	1712	Spring washer B 6 Din 137	1	1	1	1	1	1
130	2324	Washer 12.1x26.2x1	1	1	1	1	1	1
131	573	Return spring	1	1	1	1	1	1
132	2503	Gear change crank	1	1	1	1	1	1
133	2336	Pullrod	1	1	1	1	1	1
134	2374	Pullrod pivot arm	1	1	1	1	1	1
135	1903	Pivot arm A 8x20 Din 1469	1	1	1	1	1	1
136	1836	Securing ring 8x0.8 Din 471	1	1	1	1	1	1
137	2376	Hooked ratchet sliding arm	1	1	1	1	1	1
138	2375	Guide plate	1	1	1	1	1	1

Picture No.	Part No.	Description	MC 250	MC 400	MC 440	GS 250	GS 400	GS 440
139	1795	Countersunk screw 5x8 Din 965	2	2	2	2	2	2
140	3326	Hooked ratchet "T"	1	1	1	1	1	1
141	2388	Hook	1	1	1	1	1	1
142	1667	Hexagon nut M 6 Din 934	1	1	1	1	1	1
143	576	Tension spring for hooked ratchet	1	1	1	1	1	1
144	3406	Shifting plate cpl	1	1	1	1	1	1
145	3402	Shifting segment	1	1	1	1	1	1
146	2397	Shim 10.6x18.2x1	1	1	1	1	1	1
147	2393	Guide screw	2	2	2	2	2	2
148	410	Sealing ring A 14x18	2	2	2	2	2	2
149	2395	Tension spring	1	1	1	1	1	1
150	2396	Pawl pin	1	1	1	1	1	1
151	2399	Gear selection fork spindle	1	1	1	1	1	1
152	3414	Gear selection fork	3	3	3	3	3	3
153	2566	Kickstarter spindle cpl	1	1	1	1	1	1
154	2559	Kickstarter spindle	1	1	1	1	1	1
155	761	Kickstarter Quadrant	1	1	1	1	1	1
156	666	Return spring	1	1	1	1	1	1
157	1828	Tension bush 5x26 Din 1481	1	1	1	1	1	1
158	1753	Shim 12.2x30.2x0.5	1	1	1	1	1	1
159	3353	Internal ring	1	1	1	1	1	1
160	5035	Kickstarter lever cpl	1	1	1	1	1	1
161	656	Rubber pad	1	1	1	1	1	1
162	5033	Kickstarter lever	1	1	1	1	1	1
163	3867	Compress spring for kickstarter	1	1	1	1	1	1
164	1874	Ball 0 7	1	1	1	1	1	1
165	1840	Lock washer RS	1	1	1	1	1	1
166	5034	Kickstarter joint	1	1	1	1	1	1
167	1570	Hexagon screw M 6x25 Din 933	1	1	1	1	1	1
168	1704	Spring ring B 6	1	1	1	1	1	1
169	3598	Motoplat Ignition cpl	1	1	1	-	-	-
170	3530	Rubber sleeve	1	1	1	1	1	1
171	1630	Socket screw M 5x16 Din 912	3	3	3	4	4	4
172	1731	Shim B 5.3 Din 125	1	1	1	1	1	1
173	1123	Nut for generator	1	1	1	1	1	1
174	1881	Woodruff key 3x3.7 Din 6888	1	1	1	1	1	1
175	3600	Ignition coil Motoplat	1	1	1	-	-	-
176	1567	Hexagon screw M 6x16 Din 933	2	2	2	4	4	4
177	1732	Shim B 6.4 Din 125	4	4	4	8	8	8
178	1690	Hexagon nut NM 6 Din 980	2	2	2	4	4	4
179	3610	Cable plug	1	1	1	-	-	-
180	3576	Connector 6,3-1 Din 46247	1	1	1	-	-	-
181	3596	Connector housing 6,3	1	1	1	-	-	-
182	3595	Connector 9,5-6 Din 46247	1	1	1	-	-	-



Picture No.	Part No.	Description	MC 250	MC 400	MC 440	GS 250	GS 400	GS 440
183	3597	Connector housing 9,5	1	1	1	-	-	-
184	5396	Bosch Elektronik MHKZ	-	-	-	1	1	1
185	5397	Stator	-	-	-	1	1	1
186	5398	Rotor	-	-	-	1	1	1
187	5399	Electronic box	-	-	-	1	1	1
188	5404	Support for Electronic box	-	-	-	1	1	1
189	3884	Cable plug water proof	-	-	-	1	1	1
190	600	Cable plug water proof	-	-	-	1	1	1
191	1126	Cable plug	-	-	-	1	1	1
192	589	High tension lead 0 Din 72561	-	-	-	X	X	X
193	3308	Connector	-	-	-	1	1	1
194	3087	Rubber cap for electronic box	-	-	-	1	1	1
195	3305	Connector female	-	-	-	4	4	4
196	3577	Connector housing	-	-	-	2	2	2
197	3576	Connector female 6,3-1 Din 46247	-	-	-	2	2	2
198	5730	Cable FLK B1 Din 72551 black	-	-	-	X	X	X
199	2611	Wire housing B 0 8x0,7 Din 40621	-	-	-	X	X	X
200	2610	Wire housing B 0 6x0,6 Din 40621	-	-	-	X	X	X
201	2608	Wire housing B 0 4x0,5 Din 40621	-	-	-	X	X	X
202	2607	Wire housing B 0 3x0,4 Din 40621	-	-	-	X	X	X
203	603	Spark plug Champion N 2	1	1	1	1	1	1
204	5320	Carburetor cpl Bing V54-2	1	1	1	1	1	1
205	681	Flange	1	1	1	1	1	1
206	3143	Carburetor manifold	1	1	1	1	1	1
207	683	Clamp	2	2	2	2	2	2
	2948	Small gasket set consists of 6,9,10,60,61	1	-	-	1	-	-
	2949	Small gasket set consists of 6,9,10,60,61	-	1	-	-	1	-
	2950	Small gasket set consists of 6,9,10,60,61	-	-	1	-	-	1
	2958	Large gasket set consists of 6,9,10,20,30,31,34,42,43,56,60,61,95,1 48	1	-	-	1	-	-
	2959	Large gasket set consists of 6,9,10,20,30,31,34,42,43,56,60,61,95,1 48	-	1	-	-	1	-
	2960	Large gasket set consists of 6,9,10,20,30,31,34,42,43,56,60,61,95,1 48	-	-	1	-	-	1
	3602	Sealing paste for ignition	1	1	1	1	1	1

X - meters



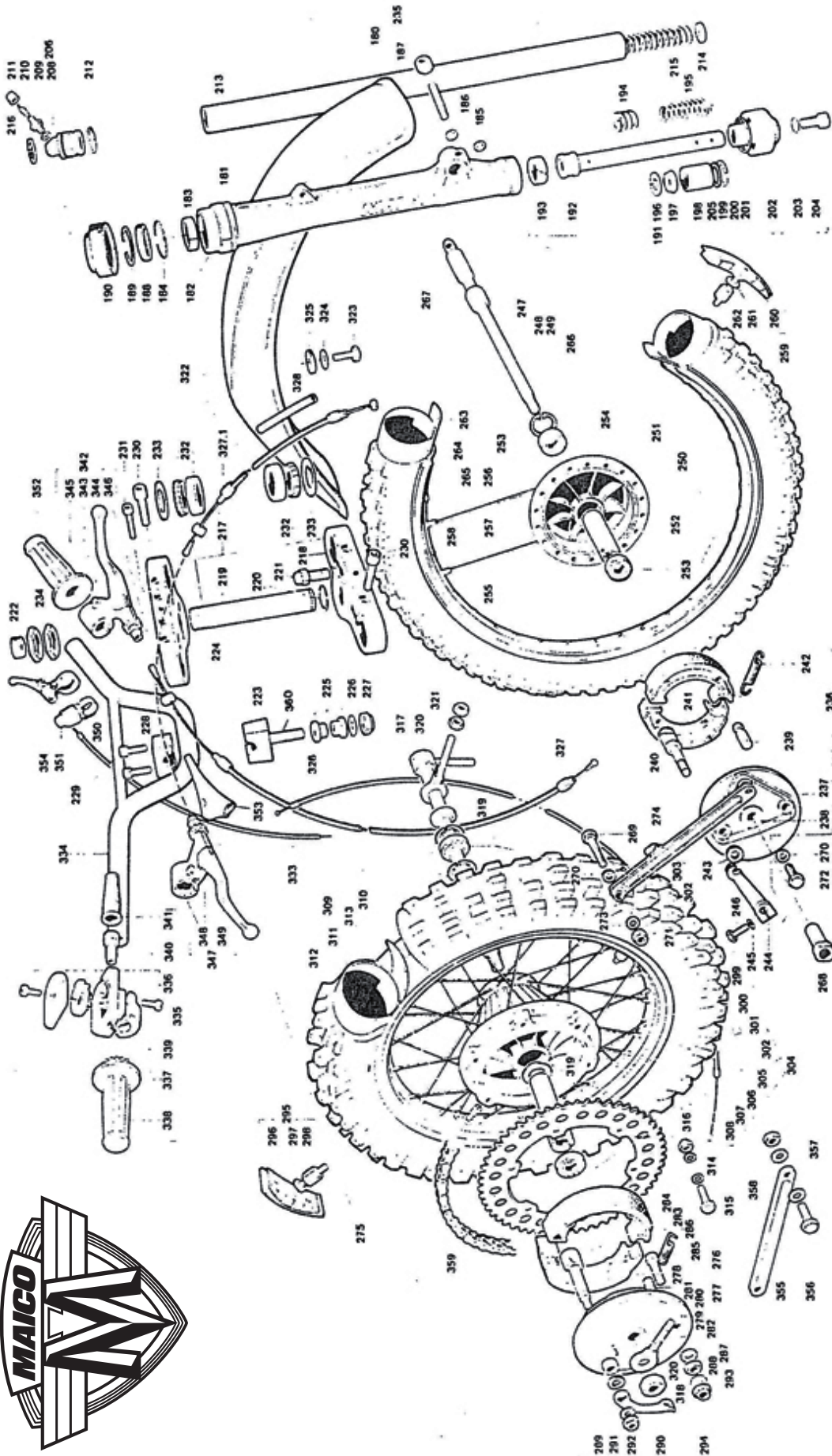
Picture No.	Part No.	Description	MC	MC	MC	GS	GS	GS
			250	400	440	250	400	440
			Quantity					
1	6198	Frame cpl	1	1	1	-	-	-
	6360	Frame cpl	-	-	-	1	1	1
2	6207	Swing arm	1	1	1	-	-	-
	6375	Swing arm	-	-	-	1	1	1
3	3932	Needle cage HK 2030	2	2	2	2	2	2
4	1930	O ring	4	4	4	1	1	1
5	1931	Bush for swing arm	2	2	2	2	2	2
6	1932	Guide plate for swing arm	2	2	2	2	2	2
7	1732	Washer B 6.4 Din 125	2	2	2	2	2	2
8	1575	Hexagon screw M 6x60 Din 931	1	1	1	1	1	1
9	1690	Hexagon nut NM 6x60 Din 980	1	1	1	1	1	1
10	1933	Chain guide plate right hand	1	1	1	1	1	1
11	1934	Chain guide plate left hand	1	1	1	-	-	-
	2287	Chain guide plate left hand	-	-	-	1	1	1
12	1935	Plastic plate for chain guide	2	2	2	2	2	2
13	1936	Spacer bush for chain guide	3	3	3	3	3	3
14	1937	Roller for chain guide	2	2	2	2	2	2
15	1580	Hexagon screw M 6x45 Din 933	2	2	2	2	2	2
16	1704	Spring ring B 6 Din 127	2	2	2	2	2	2
17	1500	Hexagon screw M 6x40 Din 931	1	1	1	1	1	1
18	1732	Washer B 6,4 Din 125	2	2	2	2	2	2
19	1690	Hexagon nut M 6 Din 980	1	1	1	1	1	1
20	6141	Rear shock cpl	2	2	2	-	-	-
	6368	Rear shock cpl	-	-	-	2	2	2
21	1942	Upper spring cup	1	1	1	-	-	-
	6369	Upper spring cup	-	-	-	1	1	1
22	1943	Lower spring cup	1	1	1	-	-	-
	6370	Lower spring cup	-	-	-	1	1	1
23	1944	Circlip SW 40	1	1	1	-	-	-
	6371	Circlip	-	-	-	1	1	1
24	1945	Guide ring for spring	1	1	1	-	-	-
	6372	Guide ring for spring	-	-	-	1	1	1
25	6139	Spring long	1	1	1	-	-	-
	6373	Spring long	-	-	-	1	1	1
26	1947	Spring short	1	1	1	-	-	-
	6374	Spring short	-	-	-	1	1	1
27	1948	Bush	2	2	2	-	-	-
28	1940	Silent bloc	2	2	2	-	-	-
29	3937	Swing arm spindle	1	1	1	1	1	1
30	1718	Spring washer B 14 Din 137	1	1	1	1	1	1
31	5011	Hexagon nut NM 14x1.5 Din 980-8	1	1	1	1	1	1
32	1594	Hexagon screw M 8x40 Din 931	4	4	4	4	4	4

Picture No.	Part No.	Description	MC 250	MC 400	MC 440	GS 250	GS 400	GS 440
33	1734	Washer B 8,4 Din 125	8	8	8	8	8	8
34	1692	Self locking nut M 8 Din 980	4	4	4	4	4	4
35	6143	Rear fender	1	1	1	-	-	-
	6380	Rear fender	-	-	-	1	1	1
36	1571	Hexagon screw M 6x30 Din 931	4	4	4	4	4	4
37	1732	Washer B 6,4 Din 125	4	4	4	4	4	4
38	1750	Washer 6,4 Din 9021	8	8	8	8	8	8
39	1690	Self locking nut NM 6 Din 980	4	4	4	4	4	4
40	6156	Front brake lever	1	1	1	1	1	1
41	1570	Hexagon screw M 6x25 Din 933	1	1	1	1	1	1
42	1667	Hexagon nut M 6 Din 934	1	1	1	1	1	1
43	6158	Bush for brake lever	1	1	1	1	1	1
44	1977	Rear brake rod	1	1	1	1	1	1
45	1732	Washer B 6,4 Din 125	1	1	1	1	1	1
46	1690	Self locking nut NM 6 Din 980	1	1	1	1	1	1
47	406	Ventilation hose	X	X	X	X	X	X
48	237	Clamp	1	1	1	1	1	1
49	1527	Cylinder head screw M 4x10 Din 84	1	1	1	1	1	1
50	1702	Spring ring B 4 Din 127	1	1	1	1	1	1
51	1665	Hexagon nut M 4 Din 934	1	1	1	1	1	1
52	236	Extension spring	1	1	1	1	1	1
53	1667	Hexagon nut M 6 Din 934	1	1	1	1	1	1
54	242	Pressure spring	1	1	1	1	1	1
55	1732	Washer B 6,4 Din 125	1	1	1	1	1	1
56	244	Nipple holder	1	1	1	1	1	1
57	243	Wing nut	1	1	1	1	1	1
58	1500	Hexagon screw M 6x40 Din 931	1	1	1	1	1	1
59	1732	Washer B 6,4 Din 125	1	1	1	1	1	1
60	1690	Hexagon nut NM 6 Din 980	1	1	1	1	1	1
61	6160	Tank	1	1	1	-	-	-
	6386	Tank	-	-	-	1	1	1
62	6161	Maico emblem, left hand	1	1	1	1	1	1
63	6162	Maico emblem, right hand	1	1	1	1	1	1
64	2228	Tank cap	1	1	1	1	1	1
65	406	Gasoline hose	X	X	X	X	X	X
66	2831	Gasoline tap	1	1	1	1	1	1
67	2832	Hose clip	1	1	1	1	1	1
68	3527	Rubber pad for tank	1	1	1	1	1	1
69	3522	Rubber pad for tank rear	1	1	1	1	1	1
70	3866	Moulded rubber mount	2	2	2	2	2	2
71	5348	Bush for tank	2	2	2	2	2	2
72	5344	Rubber ring for tank	2	2	2	2	2	2
73	1734	Washer B 8,4 Din 125	2	2	2	2	2	2
74	1604	Hexagon screw M 8x90 Din 931	1	1	1	1	1	1
75	1692	Self locking nut NM 8 Din 980	1	1	1	1	1	1

Picture No.	Part No.	Description	MC 250	MC 400	MC 440	GS 250	GS 400	GS 440
76	3397	Tension ring	1	1	1	1	1	1
77	5192	Seat cpl (low)	1	1	1	1	1	1
	5200	Seat cpl (high)	1	1	1	1	1	1
78	5391	Seal low less pos 85 & 86	1	1	1	1	1	1
	6392	Seat cpl high less pos 85 & 86	1	1	1	1	1	1
79	5193	Seat base	1	1	1	1	1	1
80	5194	Seat padding (low)	1	1	1	1	1	1
	5199	Seat padding (high)	1	1	1	1	1	1
81	5195	Seat cover	1	1	1	1	1	1
82	286	Clamp holder for seat	1	1	1	1	1	1
83	1704	Spring washer B 6 Din 127	2	2	2	2	2	2
84	1567	Hexagon screw M 6x16 Din 933	2	2	2	2	2	2
85	5197	Seat bracket	1	1	1	1	1	1
86	1728	Self locking screw	4	4	4	4	4	4
87	1568	Hexagon screw M 8x18 Din 933	1	1	1	1	1	1
88	1592	Hexagon screw M 8x30 Din 933	1	1	1	1	1	1
89	1749	Washer 8,4 Din 9021	3	3	3	3	3	3
90	1734	Washer B 8,4 Din 125	1	1	1	1	1	1
91	1692	Self locking nut NM 8 Din 980	2	2	2	2	2	2
92	6228	Foot rest right hand cpl	1	1	1	1	1	1
93	6234	Foot rest left hand cpl	1	1	1	1	1	1
94	6237	Foot rest spring right hand	1	1	1	1	1	1
95	6238	Foot rest spring left hand	1	1	1	1	1	1
96	6239	Bush for foot rest	2	2	2	2	2	2
97	6240	Socket screw M 10x25 Din 6912	2	2	2	2	2	2
98	1692	Self locking nut NM 8 Din 980	2	2	2	2	2	2
99	2258	Air filter box	1	1	1	1	1	1
100	2485	Rubber ring for filter box	1	1	1	1	1	1
101	2259	Flange for air box outside	1	1	1	1	1	1
102	5153	Foam ring	1	1	1	1	1	1
103	3183	Flange for air box	1	1	1	1	1	1
104	3184	Spacer tube	1	1	1	1	1	1
105	1667	Hexagon nut	1	1	1	1	1	1
106	3181	Foam filter	1	1	1	1	1	1
107	3164	Air filter body	1	1	1	1	1	1
108	1750	Washer 6,4 Din 9021	1	1	1	1	1	1
109	2260	Wing nut	1	1	1	1	1	1
110	343	Rubber sleeve	1	1	1	1	1	1
111	348	Clamp	1	1	1	1	1	1
112	683	Clamp	5	5	5	5	5	5
113	5204	Foam seal	X	X	X	-	-	-
114	2261	Strengthening plate for filter box	2	2	2	-	-	-
115	1569	Hexagon screw M 6x20 Din 9021	1	1	1	1	1	1
116	1750	Washer 6,4 Din 9021	1	1	1	1	1	1
117	2708	Rubber washer	1	1	1	1	1	1

Picture No.	Part No.	Description	MC 250	MC 400	MC 440	GS 250	GS 400	GS 440
118	1732	Washer B 6,4 Din 125	1	1	1	1	1	1
119	1690	Self locking nut NM 6 Din 980	1	1	1	1	1	1
120	6241	Splash guard	1	1	1	-	-	-
	6286	Splash guard	-	-	-	1	1	1
121	1567	Hexagon screw M 6x16 Din 933	4	4	4	4	4	4
122	1750	Washer 6,4 Din 9021	6	6	6	6	6	6
123	1732	Washer B 6,4 Din 125	2	2	2	2	2	2
124	1690	Self locking nut NM 6 Din 980	4	4	4	4	4	4
125	5204	Foam seal	X	X	X	X	X	X
126	2264	Side panel left side	1	1	1	1	1	1
127	6244	Number plate transfers green	2	-	-	-	-	-
	6264	Number plate transfers yellow	-	2	2	2	2	2
128	6246	Side panel right side	1	1	1	1	1	1
129	5029	Spacer washer for side panel	6	6	6	6	6	6
130	2708	Rubber washer	6	6	6	6	6	6
131	3711	Plastic screw	6	6	6	6	6	6
132	6247	Cable guide	1	1	1	-	-	-
133	6251	Front number plate	1	1	1	-	-	-
134	6252	Front number plate transfers green	1	-	-	-	-	-
	6261	Front number plate transfers Yellow	-	1	1	-	-	-
135	6265	Spring nut	2	2	2	-	-	-
136	3094	Sliding rollers	2	2	2	-	-	-
137	6253	Plastic screw	2	2	2	-	-	-
138	2277	Cylinder head stay right hand	1	-	-	-	-	-
	2282	Cylinder head stay right hand	-	1	1	-	1	1
139	2278	Cylinder head stay left hand	1	-	-	1	-	-
	2283	Cylinder head stay left hand	-	1	1	-	1	1
140	1591	Hexagon screw M 8x25 Din 933	1	1	1	1	1	1
141	1692	Self locking nut NM 8 Din 980	3	3	3	3	3	3
142	1734	Washer B 8,4 Din 125	4	4	4	4	4	4
143	1592	Hexagon screw M 8x30 Din 933	2	2	2	2	2	2
144	1714	Spring washer B 8 Din 137	2	2	2	2	2	2
145	6254	Set of engine bolts pos 146,147,148	1	1	1	1	1	1
146	1610	Hexagon screw M 8x120 Din 931	2	2	2	2	2	2
147	1734	Washer B 8,4 Din 125	4	4	4	4	4	4
148	1700	Self locking nut NM 8 Din 980	2	2	2	2	2	2
149	6267	Plastic clip	2	2	2	2	2	2
150	6274	Exhaust system cpl	1	-	-	-	-	-
	6278	Exhaust system cpl	-	1	1	-	-	-
	6394	Exhaust system cpl D, GB, I, F, B	-	-	-	1	-	-
	6395	Exhaust system cpl USA	-	-	-	1	-	-
	6399	Exhaust system cpl D, GB, I, F, B	-	-	-	-	1	1
	6400	Exhaust system cpl USA	-	-	-	-	1	1
151	6272	Exhaust system, welded	1	-	-	-	-	-

Picture No.	Part No.	Description	MC 250	MC 400	MC 440	GS 250	GS 400	GS 440
	6277	Exhaust system, welded	-	1	1	-	1	1
	6390	Exhaust system, welded D, GB, I, F, B	-	-	-	1	-	-
151.1	5651	Connecting tube for silencer	-	-	-	1	-	-
	5665	Connecting tube for silencer	-	-	-	-	1	1
152	5466	Silencer cpl	1	-	-	-	-	-
	5485	Silencer cpl	-	1	1	-	-	-
	5656	Silencer cpl	-	-	-	1	1	1
153	5465	Silencer, welded	1	-	-	-	-	-
	5484	Silencer, welded	-	1	1	-	-	-
154	5155	Exhaust padding	-	1	1	-	-	-
	3557	Exhaust padding	1	1	1	-	-	-
155	5311	End cap	1	1	1	-	-	-
156	1859	Retaining ring 60x2 Din 472	X	X	X	X	X	X
157	896	Asbestos cord	1	1	1	1	1	1
158	6275	Pressure spring	1	1	1	1	1	1
159	6276	Spacer tube	1	1	1	1	1	1
160	1750	Washer 6,4 Din 9021	1	1	1	1	1	1
161	1523	Hexagon screw M 8x70 Din 912	1	1	1	1	1	1
162	1750	Washer 6,4 Din 9021	2	2	2	2	2	2
163	1166	Silent bloc for exhaust	2	2	2	2	2	2
164	1732	Washer B 6,4 Din 125	2	2	2	2	2	2
165	1690	Self locking nut NM 6 Din 980	4	4	4	4	4	4
166	5430	Washer	2	2	2	2	2	2
167	1750	Washer 6,4 Din 9021	2	2	2	2	2	2
168	1704	Spring ring B 6 Din 127	2	2	2	2	2	2
169	1525	Hexagon screw M 6x14 Din 932	1	-	-	1	1	1
170	5429	Clamp SP 28/15	-	1	1	-	-	-
	5474	Clamp SP 35/15	-	1	1	-	-	-
171	5453	Bush for silencer securing bolt	1	1	1	1	1	1
172	5345	Rubber washer	2	2	2	2	2	2
173	325	Plastic cable clip	8	8	8	8	8	8





Picture No.	Part No.	Description	MC	MC	MC	GS	GS	GS
			250	400	440	250	400	440
					Quantity			
180	6221	Fork leg cpl	2	2	2	2	2	2
181	2170	Slider tube	2	2	2	2	2	2
182	2166	Slider tube with bush	2	2	2	2	2	2
183	2168	Guide bush for main tube	2	2	2	2	2	2
184	2169	Circlip for fork	2	2	2	2	2	2
185	1734	Washer B 8,4 Din 125	4	4	4	4	4	4
186	1783	Stud M 8x30 Din 939	2	2	2	2	2	2
187	1692	Self locking nut NM 8 Din 980	2	2	2	2	2	2
188	2171	Sealing ring RP 37.8x48x6	2	2	2	2	2	2
189	2172	Circlip	2	2	2	2	2	2
190	3907	Sealing ring	2	2	2	2	2	2
191	6216	Damper cpl	2	2	2	2	2	2
192	6215	Damper tube	2	2	2	2	2	2
193	3789	Piston ring for damper	2	2	2	2	2	2
194	2179	Counter spring hard	2	2	2	2	2	2
195	2181	Counter spring soft	2	2	2	2	2	2
196	3369	Valve seat	2	2	2	2	2	2
197	3368	Valve	2	2	2	2	2	2
198	3367	Damper insert	2	2	2	2	2	2
199	3366	Retaining ring 34x1.5 Din 472	2	2	2	2	2	2
200	6217	Bush for damper tube	2	2	2	2	2	2
201	1902	O-ring	2	2	2	2	2	2
202	2183	Damper plug	2	2	2	2	2	2
203	430	Sealing ring A 8x14 Din 7603	2	2	2	2	2	2
204	1653	Socket screw M 8x20 Din 912	2	2	2	2	2	2
205	3777	Spacer washer 0.3	When needed					
	3778	Spacer washer 0.5	When needed					
206	6218	Fork plug cpl	2	2	2	2	2	2
207	6219	Fork plug	2	2	2	2	2	2
208	277	Sealing ring A 8x11.5 Din 7603	2	2	2	2	2	2
209	2185	Air valve body	2	2	2	2	2	2
210	2186	Air valve insert	2	2	2	2	2	2
211	2187	Air valve cap	2	2	2	2	2	2
212	6220	O-ring	2	2	2	2	2	2
213	6222	Main tube	2	2	2	2	2	2
214	2193	O-ring	1	1	1	1	1	1
215	2194	Fork spring	2	2	2	2	2	2
216	3366	Retaining ring 34x1.5 Din 472	2	2	2	2	2	2

Picture No.	Part No.	Description	MC 250	MC 400	MC 440	GS 250	GS 400	GS 440
217	3371	Lower cross head cpl	1	1	1	1	1	1
218	3372	Lower cross head	1	1	1	1	1	1
219	3373	Steering tube	1	1	1	1	1	1
220	3375	Circlip A 26 Din 7993	1	1	1	1	1	1
221	226	Locking bolt	2	2	2	2	2	2
222	5003	Plug for steering tube	1	1	1	1	1	1
223	2195	Lower handlebar clamp	2	2	2	2	2	2
224	3381	Upper cross head	1	1	1	1	1	1
225	15	Rubber buffer	4	4	4	4	4	4
226	1758	Washer	2	2	2	2	2	2
227	1693	Self locking nut NM 10 Din 980	2	2	2	2	2	2
228	88	Upper handlebar clamp	2	2	2	2	2	2
229	1646	Socket screw M 8x30 Din 912	4	4	4	4	4	4
230	1657	Socket screw M 10x40 Din 912	4	4	4	4	4	4
231	1650	Socket screw M 8x60 Din 912	2	2	2	2	2	2
232	3297	Roller bearing L44649/610	2	2	2	2	2	2
233	3296	Nilos ring	2	2	2	2	2	2
234	3533	Hexagon nut	2	2	2	2	2	2
235	6223	Front fork cpl	1	1	1	1	1	1
236	2239	Frone brake plate cpl	1	1	1	1	1	1
237	2236	Front brake plate with bush	1	1	1	1	1	1
238	2238	Bush for brake plate	1	1	1	1	1	1
239	2418	Pivot bolt	1	1	1	1	1	1
240	2419	Brake toggle	1	1	1	1	1	1
241	1322	Brake shoe	2	2	2	2	2	2
242	1323	Tension spring	2	2	2	2	2	2
243	187	Rubber washer	1	1	1	1	1	1
244	1324	Front brake lever	1	1	1	1	1	1
245	1704	Spring washer B 6 Din 127	1	1	1	1	1	1
246	1569	Hexagon screw M 6x20 Din 933	1	1	1	1	1	1
247	6146	Front wheel cpl	1	1	1	-	-	-
	5624	Front wheel cpl	-	-	-	1	1	1
248	2240	Front wheel with tire	1	1	1	-	-	-
	5623	Front wheel with tire	-	-	-	1	1	1
249	2235	Front wheel bare	1	1	1	-	-	-
	5622	Front wheel bare	-	-	-	1	1	1
250	2234	Front brake drum cpl	1	1	1	-	-	-
	5620	Front brake drum cpl	-	-	-	1	1	1
251	2233	Front brake drum	1	1	1	-	-	-
	5511	Front brake drum	-	-	-	1	1	1

Picture No.	Part No.	Description	MC 250	MC 400	MC 440	GS 250	GS 400	GS 440
252	2428	Spacer tube	1	1	1	1	1	1
253	2427	Ball bearing 6202	2	2	2	2	2	2
254	1853	Retainer ring	1	1	1	1	1	1
255	3497	Front rim	18	18	18	18	18	18
256	2432	Spoke short	18	18	18	18	18	18
257	2433	Spoke long	36	36	36	36	36	36
258	2242	Spoke nipple 4.5/M 4	1	1	1	1	1	1
259	168	Front tire holder cpl	1	1	1	1	1	1
260	2568	Front tire holder plate	1	1	1	1	1	1
261	1734	Washer B 8,4 Din 125	1	1	1	1	1	1
262	289	Nut for tire holder	1	1	1	1	1	1
263	2001	Rim strap 21"	1	1	1	1	1	1
264	2002	Inner tube 3.00x21"	1	1	1	1	1	1
265	2003	Front tire 3.00x21"	1	1	1	1	1	1
266	2247	Front axle	1	1	1	1	1	1
267	2250	Spacer bush	1	1	1	-	-	-
	5625	Spacer bush	-	-	-	1	1	1
268	2430	Threaded bush	1	1	1	1	1	1
269	1594	Hexagon screw M 8x40 Din 931	1	1	1	1	1	1
270	1734	Washer B 8,4 Din 125	2	2	2	2	2	2
271	1692	Self locking nut NM 8 Din 980	1	1	1	1	1	1
272	1589	Hexagon screw M 8x20 Din 933	1	1	1	1	1	1
273	1714	Spring washer B 8 Din 137	1	1	1	1	1	1
274	2424	Front brake arm	1	1	1	1	1	1
275	6290	Rear wheel cpl	1	1	1	1	1	1
276	3186	Rear brake plate cpl	1	1	1	1	1	1
277	3045	Rear brake plate with parts	1	1	1	1	1	1
278	3187	Rear brake plate	1	1	1	1	1	1
279	183	Spacer bush	2	2	2	2	2	2
280	3188	Cover plate	1	1	1	1	1	1
281	3189	Pivot bolt	1	1	1	1	1	1
282	1901	Oval head nail 3x8 Din 1476	1	1	1	1	1	1
283	151	Brake toggle	1	1	1	1	1	1
284	188	Brake shoe	2	2	2	2	2	2
285	6148	Tension spring	2	2	2	2	2	2
286	3270	Socket screw M 10x40 Din 6912	1	1	1	1	1	1
287	1715	Spring washer	1	1	1	1	1	1
288	1674	Hexagon nut M 10 Din 934	1	1	1	1	1	1

Picture No.	Part No.	Description	MC 250	MC 400	MC 440	GS 250	GS 400	GS 440
289	187	Rubber washer	1	1	1	1	1	1
290	3190	Rear brake lever	1	1	1	1	1	1
291	1734	Washer B 8,4 Din 125	2	2	2	2	2	2
292	1692	Self locking nut NM 8 Din 980	1	1	1	1	1	1
293	1735	Washer B 10.5 Din 125	1	1	1	1	1	1
294	1693	Self locking nut NM 10 Din 980	1	1	1	1	1	1
295	2434	Rear tire holder cpl	1	1	1	1	1	1
296	2567	Rear tire holder plate	1	1	1	1	1	1
297	1734	Washer B 8,4 Din 125	1	1	1	1	1	1
298	289	Nut for tire holder	1	1	1	1	1	1
299	3875	Rear brake drum cpl	1	1	1	1	1	1
300	3868	Rear brake drum	1	1	1	1	1	1
301	3872	Spacer bush rear cpl	1	1	1	1	1	1
302	205	Ball bearing 6303 2 RS C3	2	2	2	2	2	2
303	1852	Retaining ring 47x1.75	2	2	2	2	2	2
304	3876	Rear wheel bare	1	1	1	1	1	1
305	2405	Rear rim	1	1	1	1	1	1
306	2406	Spoke short	18	18	18	18	18	18
307	2407	Spoke long	18	18	18	18	18	18
308	2408	Spoke nipple	36	36	36	36	36	36
309	3343	Rear wheel with tire	1	1	1	1	1	1
310	2005	Rim strap 18"	1	1	1	1	1	1
311	2015	Inner tube 4.50x18'	1	1	1	1	1	1
312	2008	Tire 4.50x18"	1	1	1	1	1	1
313	3227	Rear wheel sprocket 56 T	1	1	1	-	-	-
	2200	Rear wheel sprocket 54 T	-	-	-	1	1	1
314	1713	Spring washer B 7 Din 137	16	16	16	16	16	16
315	3280	Hexagon screw M 7x40 Din 933	6	6	6	6	6	6
316	1691	Self locking nut NM 7 Din 980	6	6	6	6	6	6
317	3277	Rear axle cpl	1	1	1	1	1	1
318	1709	Self locking nut NM 15x1,5 Din 980	1	1	1	1	1	1
319	3880	Spacer ring	1	1	1	1	1	1
320	6287	Chain tensioner	2	2	2	2	2	2
321	1670	Hexagon nut M 8 Din 934	4	4	4	4	4	4
322	6142	Front fender	1	1	1	1	1	1
323	1569	Hexagon screw M 6x20 Din 933	4	4	4	4	4	4
324	1750	Washer 6,4 Din 9021	4	4	4	4	4	4
325	2708	Rubber washer	4	4	4	4	4	4

Picture No.	Part No.	Description	MC 250	MC 400	MC 440	GS 250	GS 400	GS 440
326	2456	Throttle cable	1	1	1	1	1	1
327	6150	Clutch cable	1	1	1	1	1	1
327.1	486	Brake cable	1	1	1	1	1	1
328	2275	Isolation hose B 8x0.7 Din 40621	X	X	X	X	X	X
333	315	Decompression cable	-	1	1	-	1	1
334	2230	Handlebar, high black	1	1	1	1	1	1
335	6261	Throttle grip cpl	-	-	-	1	1	1
336	6283	Throttle grip housing	1	1	1	1	1	1
337	6285	Throttle tube with cover	1	1	1	1	1	1
338	2148	Throttle grip, rubber	1	1	1	1	1	1
339	6284	Throttle cam	1	1	1	1	1	1
340	2211	Throttle stop screw	1	1	1	1	1	1
341	2212	Rubber sleeve for stop screw	1	1	1	1	1	1
342	2215	Hand clutch lever cpl	1	1	1	-	-	-
	3630	Hand clutch lever cpl	-	-	-	1	1	1
343	2213	Hinge for hand clutch lever	1	1	1	-	-	-
	2223	Hinge for hand clutch lever	-	-	-	1	1	1
344	2216	Hand clutch lever	1	1	1	1	1	1
345	133	Lever screw with nut	2	2	2	2	2	2
346	212	Adjusting scrwe with nut	2	2	2	2	2	2
347	2218	Hand brake lever cpl	1	1	1	1	1	1
348	2217	Hinge for hand brake lever with screw	1	1	1	1	1	1
349	2219	Hand brake lever	1	1	1	1	1	1
350	2220	Kill button cpl	1	1	1	1	1	1
351	2221	Rubber cap	1	1	1	-	-	-
352	2512	Rubber grip	1	1	1	-	-	-
353	3166	Lever cover	1	1	1	1	1	1
	6169	Lever cover	2	2	2	1	1	1
354	148	Decompression lever cpl	-	-	-	1	1	1
355	1978	Rear brake torque arm	1	1	1	-	1	1
356	1591	Hexagon screw M 8x25 Din 933	1	1	1	1	1	1
357	1734	Washer B 8,4 Din 125	2	2	2	2	2	2
358	1692	Self locking nut NM 8 Din 980	1	1	1	1	1	1
359	2281	Rear chain	1	1	1	1	1	1